

Camelot Equestrian Park Foundation is very pleased to host a 2 Day clinic with



# Don Sachey

Don grew up in the horse industry as the son of the Owners of Cherry Meadow Farm School of Horsemanship in East Northport, New York. As a competitor, he went on to represent the United States as a member of the USET in international competition. As a coach, he has trained Olympic level riders around the world. He has over 50 years of full time experience with horses, 40 of those as a professional. He works with dressage and event horses, as well as hunters and jumpers. He has designed many arenas, facilities and event courses, built them himself from the ground up, and worked in literally hundreds of locations around the world.

**Saturday & Sunday**  
**May 15-16th**

**Camelot Equestrian Park**  
**1985 Clark Road**  
**Butte Valley, CA 95965**

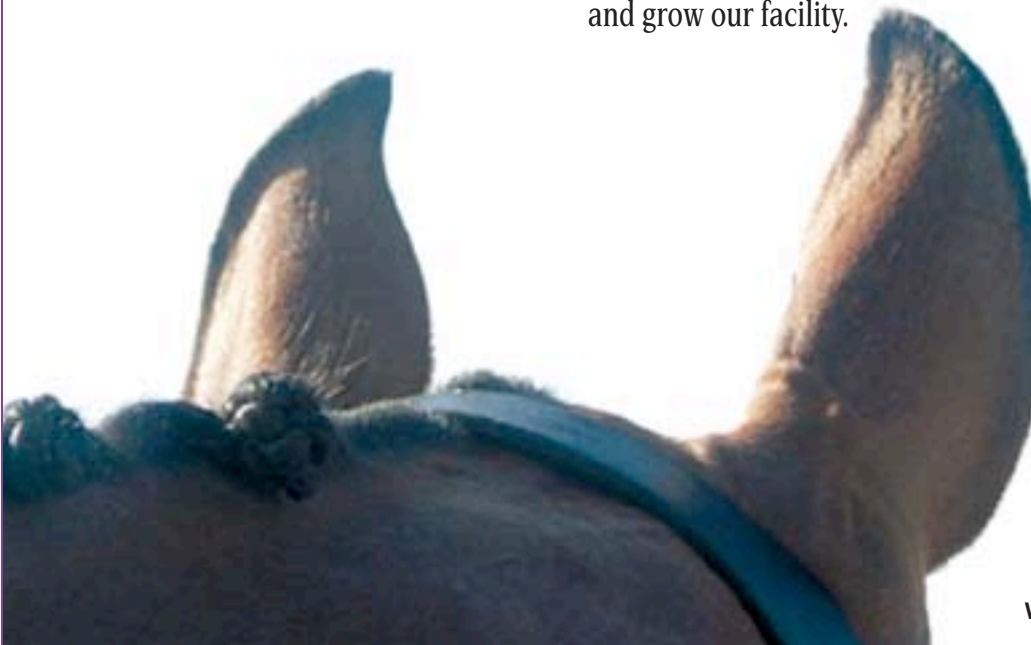
This 2 Day Clinic is a great opportunity to take advantage of Don's expertise and to support Camelot Equestrian Park Foundation at the same time.

On Friday, May 14th Don will be consulting with the Camelot Equestrian Park Foundation Advisory Committee. We are very excited to work with Don and hear his suggestions to improve and grow our facility.

Fill out the reverse side to reserve your entry in the Clinic.



[www.camelotequestrianpark.com](http://www.camelotequestrianpark.com)



# Camelot Equestrian Park—Don Sachey Clinic May 15–16th, 2010

## Information and Sign up

Fill out this sheet (please print legibly)

Name of Rider: \_\_\_\_\_

Mailing Address: \_\_\_\_\_ Telephone: \_\_\_\_\_

\_\_\_\_\_

\_\_\_\_\_

Name of Horse: \_\_\_\_\_ Clinic level desired: \_\_\_\_\_

Experience: \_\_\_\_\_

Owner: \_\_\_\_\_ Telephone: \_\_\_\_\_

### Fees

**Clinic:** \$220.00 Group (two- days) \$250.00 Private (two days) Sign up deadline: May 7, 2010

(Includes stabling)

**Camping Fee:** \$10 per night

**Stabling/Schooling Fee:** \$ 15 per day (horses not participating in clinic)

**Make checks payable to:** CEPF

**Total Enclosed \$** \_\_\_\_\_

**Don't forget to include your signed release, download and print at [www.camelotequestrianpark.com](http://www.camelotequestrianpark.com)**

**Mail to:** Yvonne De Witt  
3860 Schandoney Lane  
Yankee Hill, CA 95965  
H(530)532-9665, C (707)290-5926

**Stabling:** Pipe paddocks, Friday 12 noon–Sunday, bedding not included available for purchase, Horses not entered in clinic must fill out clinic entry & pay schooling fee (includes stabling)

**Miscellaneous:** Groups will be 5 or fewer.  
Dogs must be on leash.

**Accommodations:** Camping, no hookups, water for horses available throughout campground  
Comfort Inn, Paradise (530)876-0191 5 miles  
Comfort Inn, Oroville (530)533-9673 9 miles

**Directions:** Available on website [www.camelotequestrianpark.com](http://www.camelotequestrianpark.com)

**Local Vets:** Look Ahead Veterinary Hospital (530) 534-0722  
All About Equine (530)342-0725



1985 Clark Road • Butte Valley, CA 95965  
[www.camelotequestrianpark.com](http://www.camelotequestrianpark.com)